

Amrit

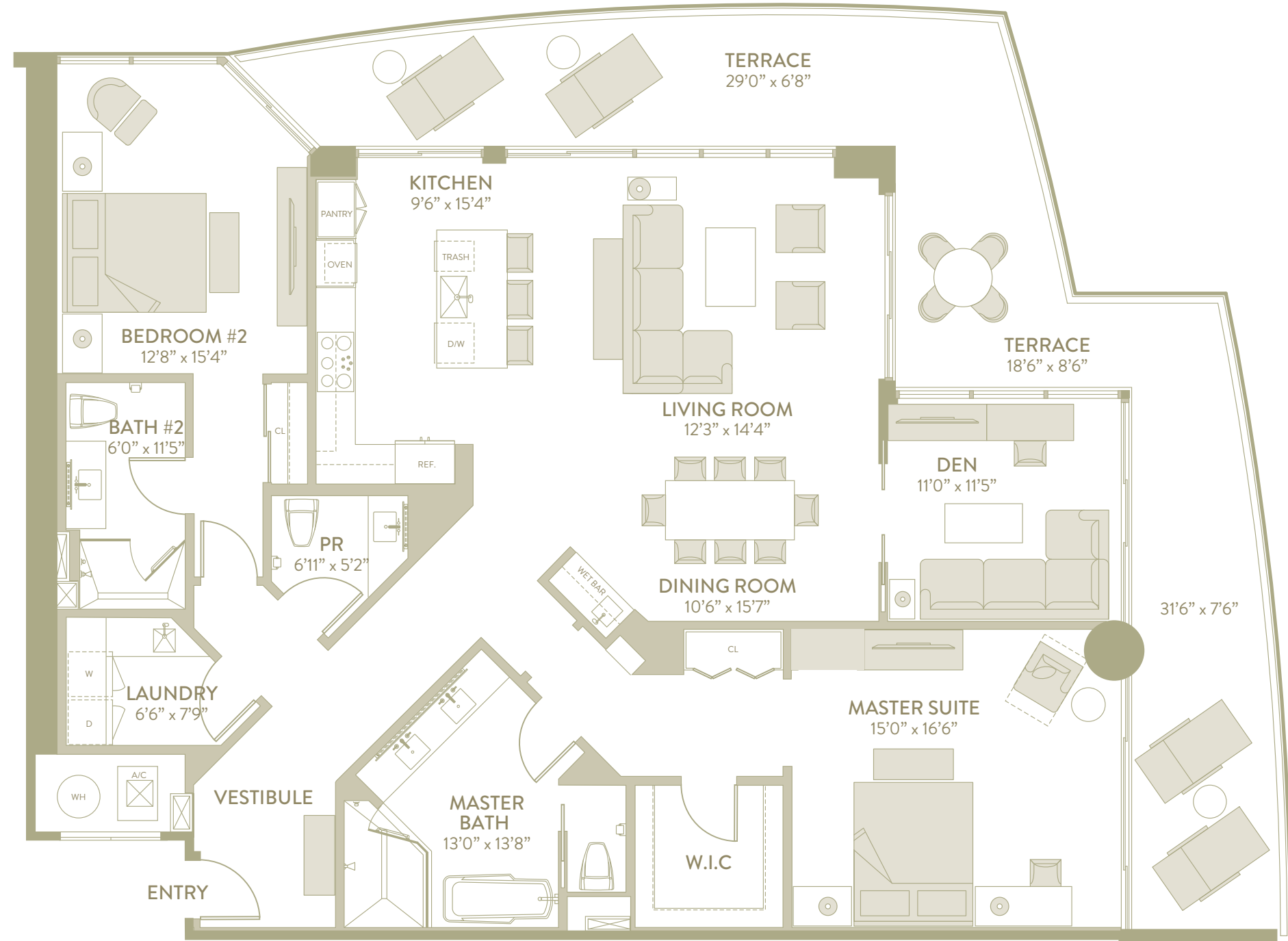
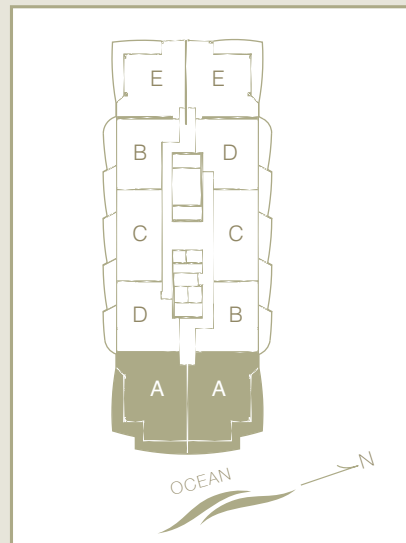
OCEAN RESORT & RESIDENCES

WELLNESS FOR LIFE

UNIT A - Tower H

2 BEDROOM / 2.5 BATHROOMS + DEN

Living Area	2,065sf (222.3sqm)
Terrace	590sf (63.5sqm)
Total	2,655sf (285.8sqm)



3100 North Ocean Drive, Singer Island
Riviera Beach, FL 33404

P 561.694.8300 amritocean.com

ORAL REPRESENTATIONS CANNOT BE RELIED UPON AS CORRECTLY STATING THE REPRESENTATIONS OF THE DEVELOPER. FOR CORRECT REPRESENTATIONS, REFERENCE SHOULD BE MADE TO THE PROSPECTUS AND ITS ATTACHMENTS.

All depictions including, without limitation, items of finish, furnishings and decoration, are conceptual only and are not necessarily included in each Unit. This offering is made only by the Prospectus for the condominium and no statement should be relied upon if not made in the Prospectus. All dimensions are approximate and may vary with actual construction, and all floor plans, prices, and development plans are subject to change. The seller reserves the absolute right, in its sole judgment and discretion, to substitute appliances, materials, fixtures, and equipment of equal or greater quality or value for those specified.

Amrit

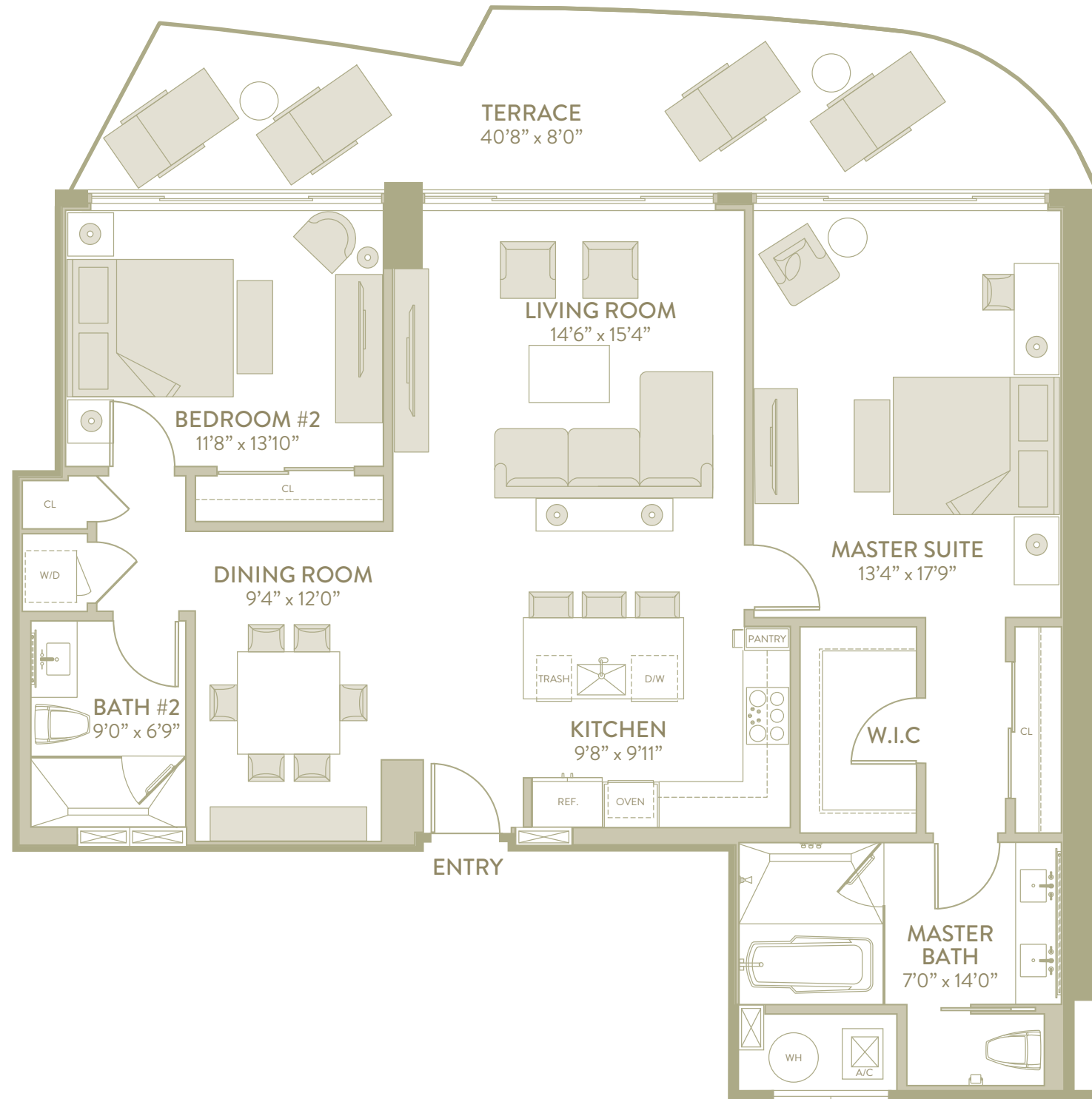
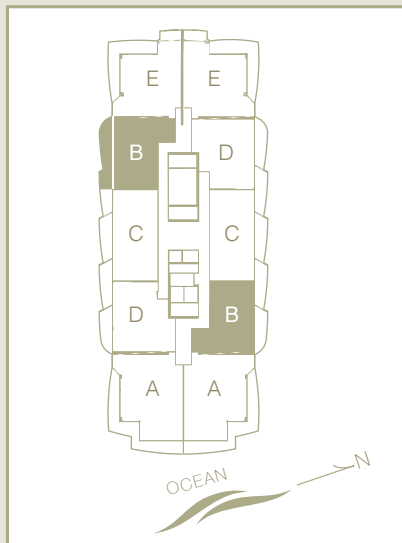
OCEAN RESORT & RESIDENCES

WELLNESS FOR LIFE

UNIT B - Tower H

2 BEDROOM / 2 BATHROOMS

Living Area	1,465sf	(157.7sqm)
Terrace	285sf	(30.7sqm)
Total	1,750sf	(188.4sqm)



3100 North Ocean Drive, Singer Island
 Riviera Beach, FL 33404
 P 561.694.8300 amritocean.com

ORAL REPRESENTATIONS CANNOT BE RELIED UPON AS CORRECTLY STATING THE REPRESENTATIONS OF THE DEVELOPER. FOR CORRECT REPRESENTATIONS, REFERENCE SHOULD BE MADE TO THE PROSPECTUS AND ITS ATTACHMENTS.
 All depictions including, without limitation, items of finish, furnishings and decoration, are conceptual only and are not necessarily included in each Unit. This offering is made only by the Prospectus for the condominium and no statement should be relied upon if not made in the Prospectus. All dimensions are approximate and may vary with actual construction, and all floor plans, prices, and development plans are subject to change. The seller reserves the absolute right, in its sole judgment and discretion, to substitute appliances, materials, fixtures, and equipment of equal or greater quality or value for those specified.

Amrit

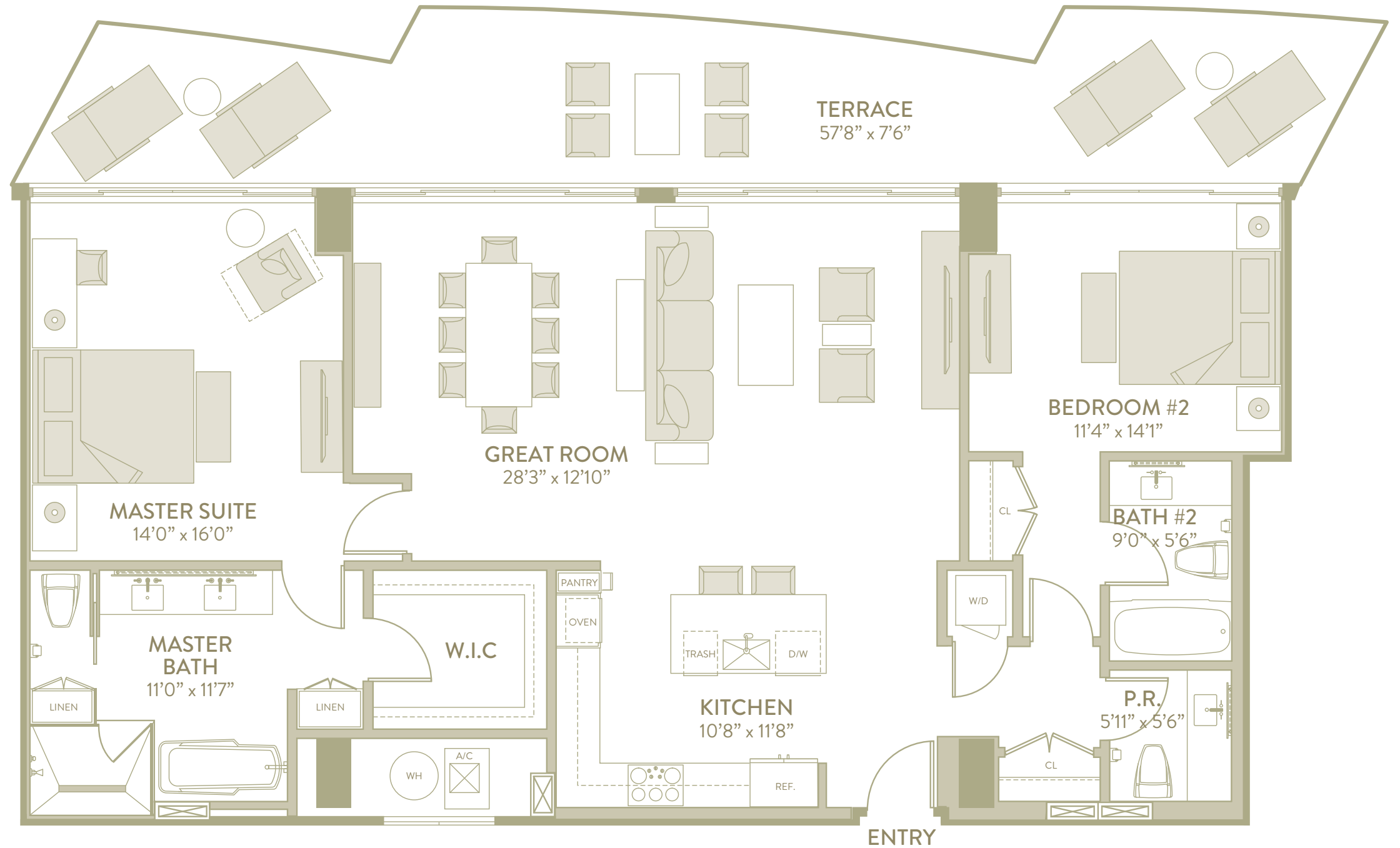
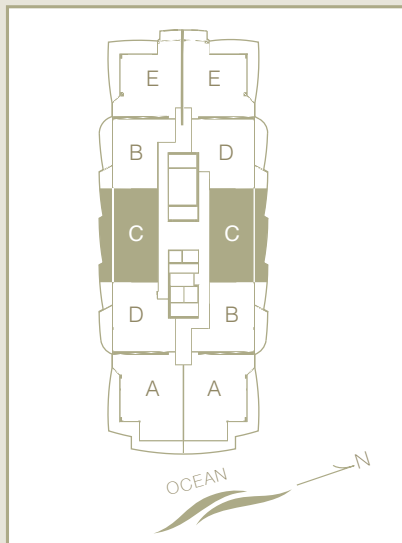
OCEAN RESORT & RESIDENCES

WELLNESS FOR LIFE

UNIT C - Tower H

2 BEDROOM / 2.5 BATHROOMS

Living Area	1,600sf	(216.9sqm)
Terrace	415sf	(44.7sqm)
Total	2,015sf	(216.9sqm)



3100 North Ocean Drive, Singer Island
Riviera Beach, FL 33404

P 561.694.8300 amritocean.com

ORAL REPRESENTATIONS CANNOT BE RELIED UPON AS CORRECTLY STATING THE REPRESENTATIONS OF THE DEVELOPER. FOR CORRECT REPRESENTATIONS, REFERENCE SHOULD BE MADE TO THE PROSPECTUS AND ITS ATTACHMENTS.

All depictions including, without limitation, items of finish, furnishings and decoration, are conceptual only and are not necessarily included in each Unit. This offering is made only by the Prospectus for the condominium and no statement should be relied upon if not made in the Prospectus. All dimensions are approximate and may vary with actual construction, and all floor plans, prices, and development plans are subject to change. The seller reserves the absolute right, in its sole judgment and discretion, to substitute appliances, materials, fixtures, and equipment of equal or greater quality or value for those specified.

Amrit

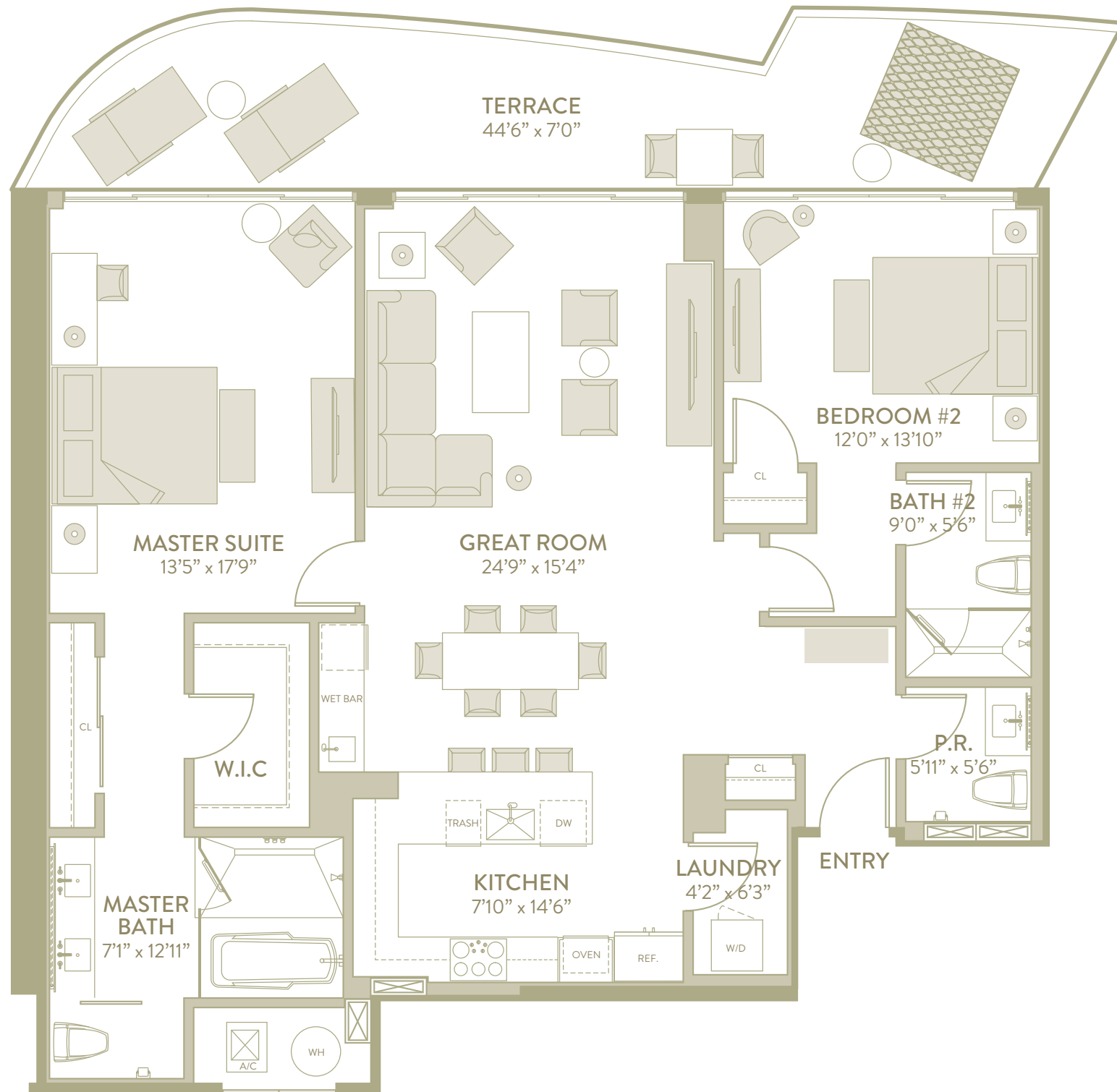
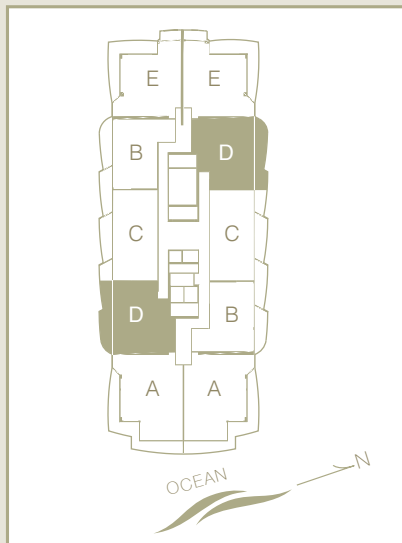
OCEAN RESORT & RESIDENCES

WELLNESS FOR LIFE

UNIT D - Tower H

2 BEDROOM / 2.5 BATHROOMS

Living Area	1,565sf (168.5sqm)
Terrace	325sf (35sqm)
Total	1,890sf (203.4sqm)



3100 North Ocean Drive, Singer Island
Riviera Beach, FL 33404

P 561.694.8300 amritocean.com

ORAL REPRESENTATIONS CANNOT BE RELIED UPON AS CORRECTLY STATING THE REPRESENTATIONS OF THE DEVELOPER. FOR CORRECT REPRESENTATIONS, REFERENCE SHOULD BE MADE TO THE PROSPECTUS AND ITS ATTACHMENTS.

All depictions including, without limitation, items of finish, furnishings and decoration, are conceptual only and are not necessarily included in each Unit. This offering is made only by the Prospectus for the condominium and no statement should be relied upon if not made in the Prospectus. All dimensions are approximate and may vary with actual construction, and all floor plans, prices, and development plans are subject to change. The seller reserves the absolute right, in its sole judgment and discretion, to substitute appliances, materials, fixtures, and equipment of equal or greater quality or value for those specified.

Amrit

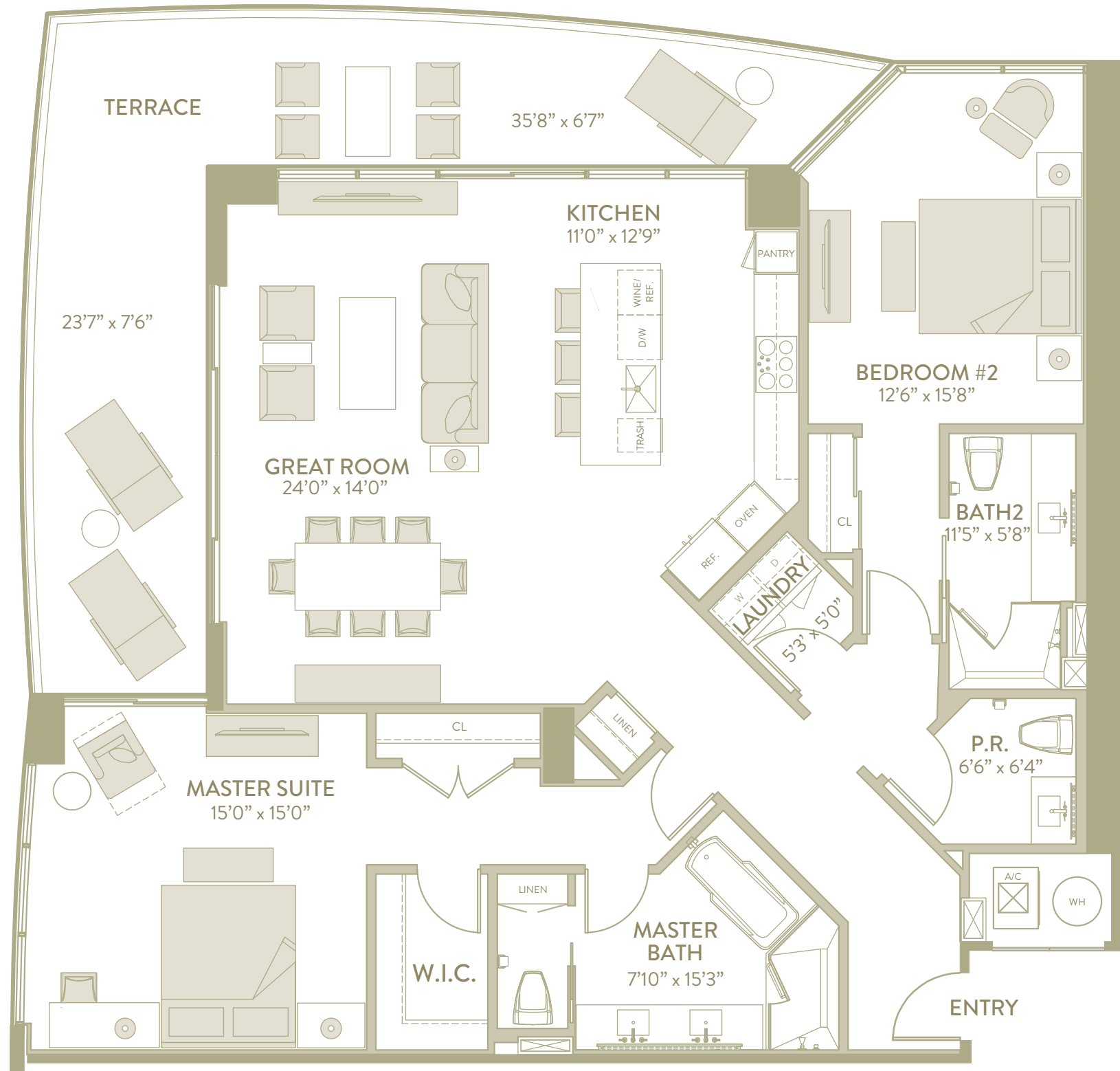
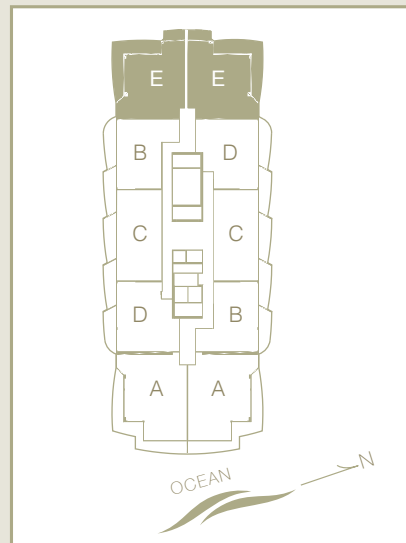
OCEAN RESORT & RESIDENCES

WELLNESS FOR LIFE

UNIT E - Tower H

2 BEDROOM / 2.5 BATHROOMS

Living Area	1,755sf (188.9sqm)
Terrace	430sf (46.3sqm)
Total	2,185sf (235.2sqm)



3100 North Ocean Drive, Singer Island
Riviera Beach, FL 33404

P 561.694.8300 amritocean.com

ORAL REPRESENTATIONS CANNOT BE RELIED UPON AS CORRECTLY STATING THE REPRESENTATIONS OF THE DEVELOPER. FOR CORRECT REPRESENTATIONS, REFERENCE SHOULD BE MADE TO THE PROSPECTUS AND ITS ATTACHMENTS.

All depictions including, without limitation, items of finish, furnishings and decoration, are conceptual only and are not necessarily included in each Unit. This offering is made only by the Prospectus for the condominium and no statement should be relied upon if not made in the Prospectus. All dimensions are approximate and may vary with actual construction, and all floor plans, prices, and development plans are subject to change. The seller reserves the absolute right, in its sole judgment and discretion, to substitute appliances, materials, fixtures, and equipment of equal or greater quality or value for those specified.

Amrit

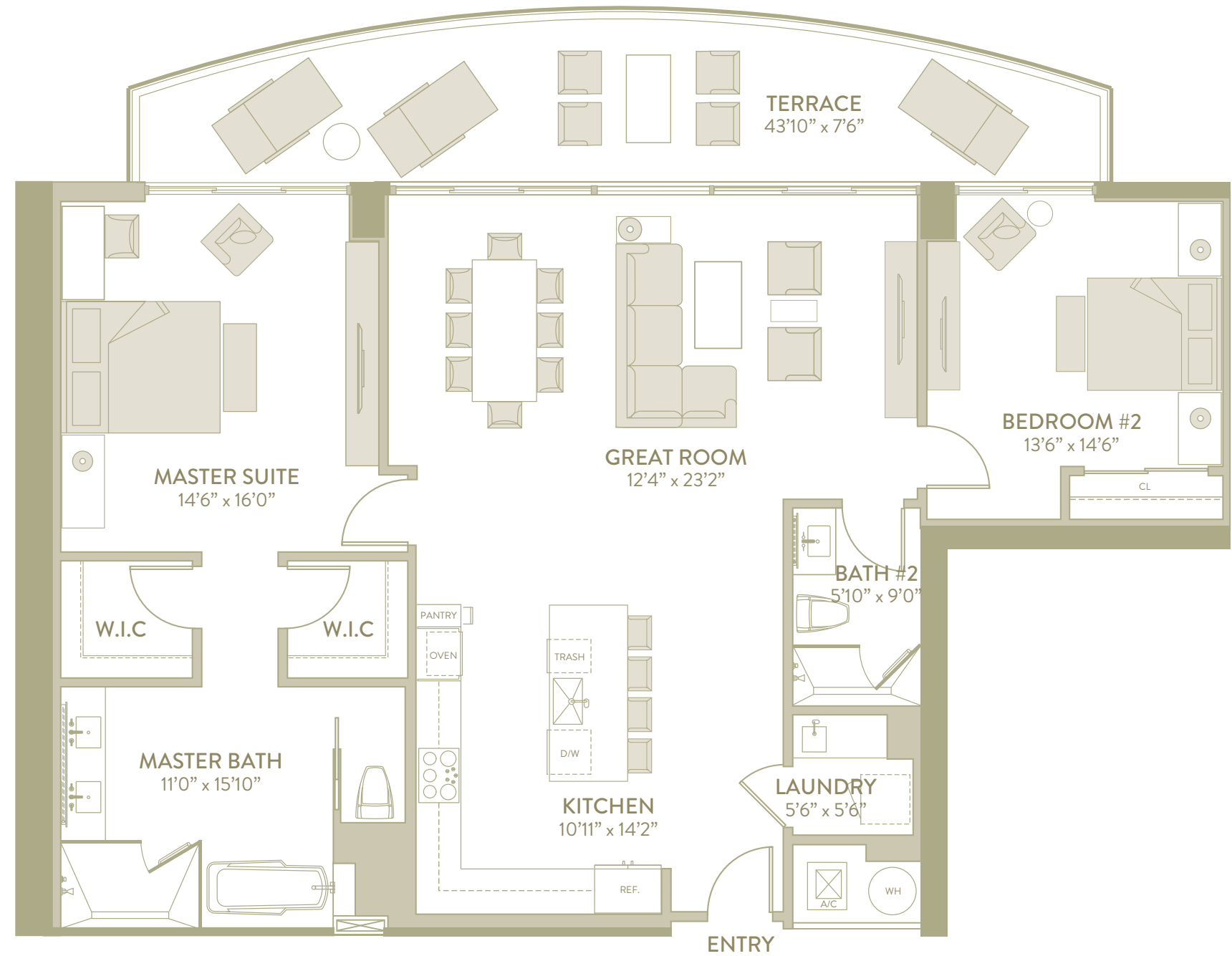
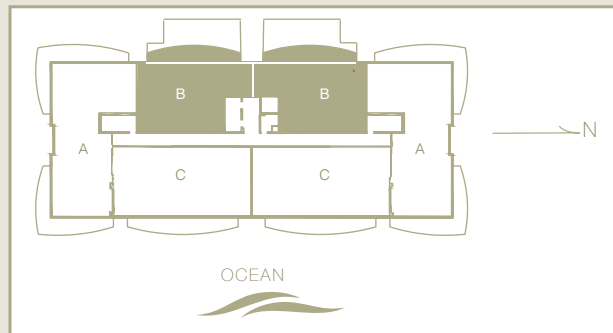
OCEAN RESORT & RESIDENCES

WELLNESS FOR LIFE

UNIT B - Tower P

2 BEDROOM / 2 BATHROOMS

Living Area	1,610sf	(174.4sqm)
Terrace	305sf	(32.8sqm)
Total	1,925sf	(207.2sqm)



3100 North Ocean Drive, Singer Island
Riviera Beach, FL 33404

P 561.694.8300 amritocean.com

ORAL REPRESENTATIONS CANNOT BE RELIED UPON AS CORRECTLY STATING THE REPRESENTATIONS OF THE DEVELOPER. FOR CORRECT REPRESENTATIONS, REFERENCE SHOULD BE MADE TO THE PROSPECTUS AND ITS ATTACHMENTS.

All depictions including, without limitation, items of finish, furnishings and decoration, are conceptual only and are not necessarily included in each Unit. This offering is made only by the Prospectus for the condominium and no statement should be relied upon if not made in the Prospectus. All dimensions are approximate and may vary with actual construction, and all floor plans, prices, and development plans are subject to change. The seller reserves the absolute right, in its sole judgment and discretion, to substitute appliances, materials, fixtures, and equipment of equal or greater quality or value for those specified.

Amrit

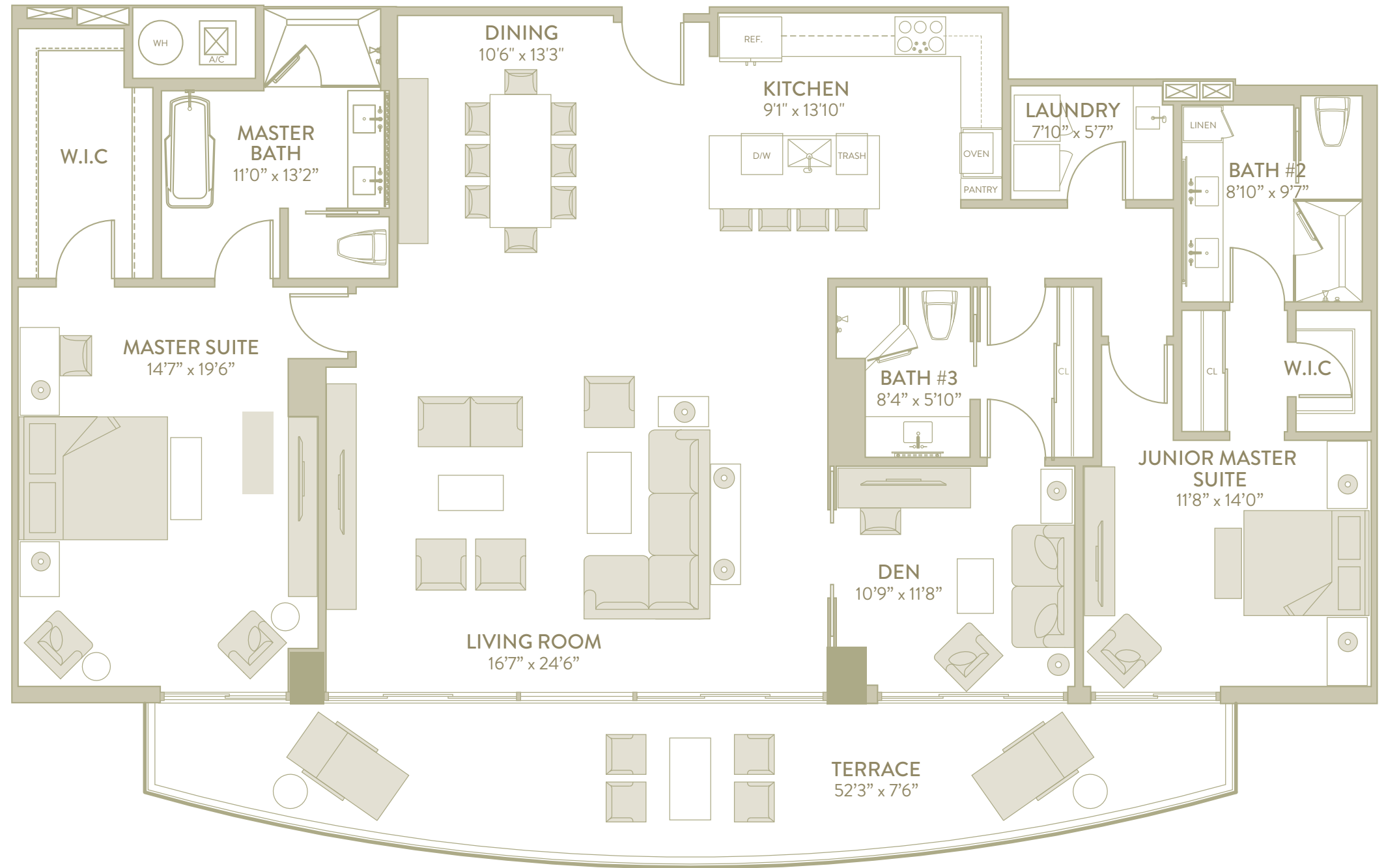
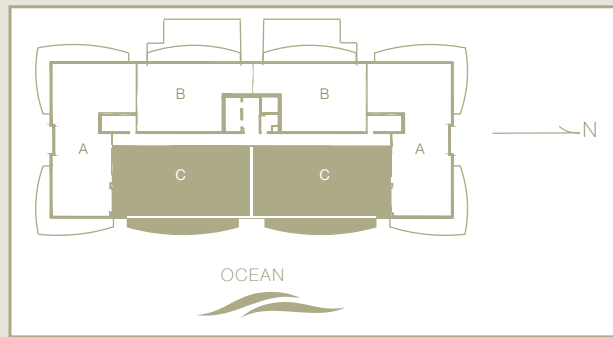
OCEAN RESORT & RESIDENCES

WELLNESS FOR LIFE

UNIT C - Tower P

2 BEDROOM / 3 BATHROOMS + DEN

Living Area	2,205sf	(237.3sqm)
Terrace	360sf	(38.8sqm)
Total	2,565sf	(276.1sqm)



3100 North Ocean Drive, Singer Island
Riviera Beach, FL 33404

P 561.694.8300 amritocean.com

ORAL REPRESENTATIONS CANNOT BE RELIED UPON AS CORRECTLY STATING THE REPRESENTATIONS OF THE DEVELOPER. FOR CORRECT REPRESENTATIONS, REFERENCE SHOULD BE MADE TO THE PROSPECTUS AND ITS ATTACHMENTS.

All depictions including, without limitation, items of finish, furnishings and decoration, are conceptual only and are not necessarily included in each Unit. This offering is made only by the Prospectus for the condominium and no statement should be relied upon if not made in the Prospectus. All dimensions are approximate and may vary with actual construction, and all floor plans, prices, and development plans are subject to change. The seller reserves the absolute right, in its sole judgment and discretion, to substitute appliances, materials, fixtures, and equipment of equal or greater quality or value for those specified.

Amrit

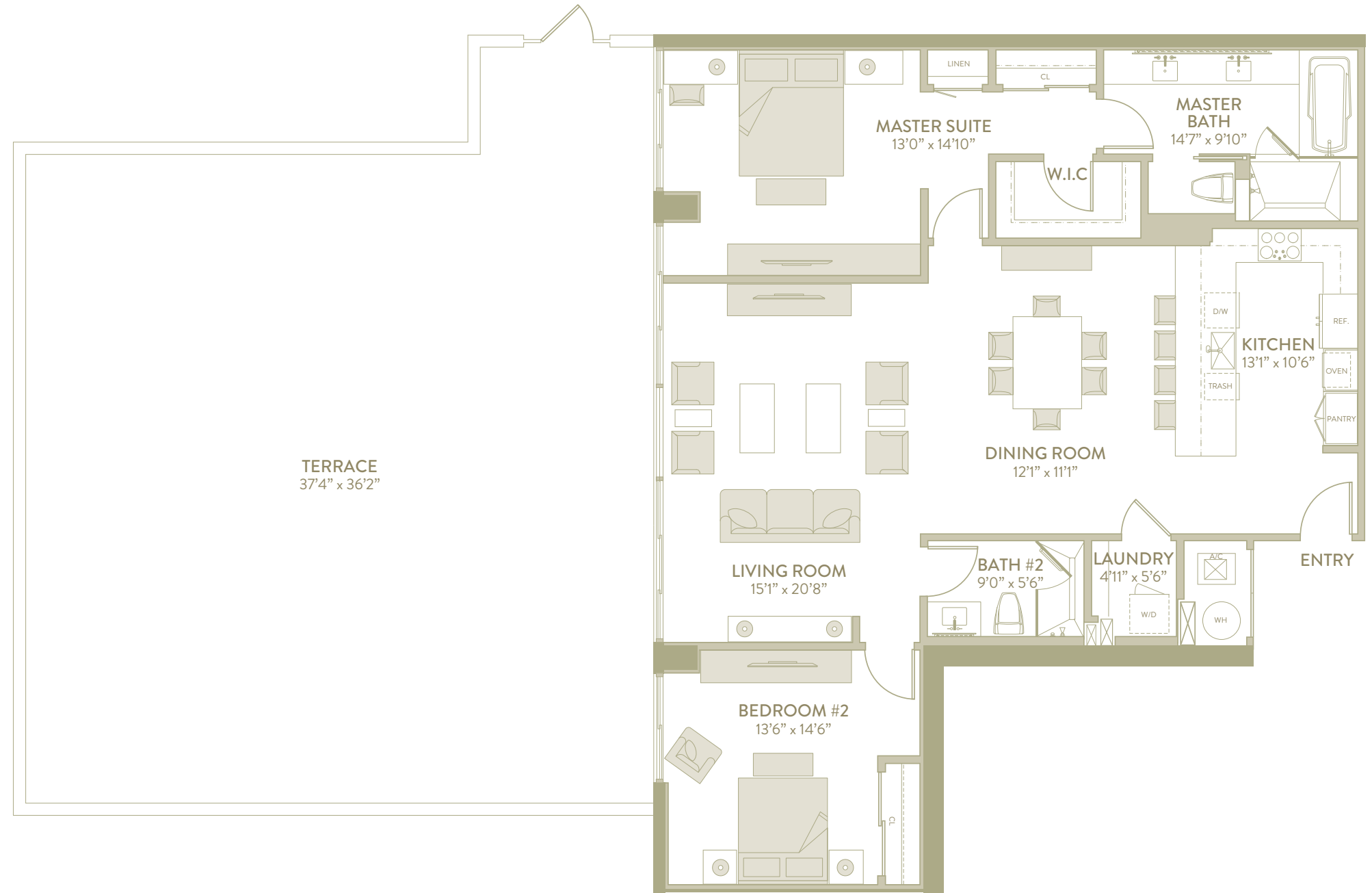
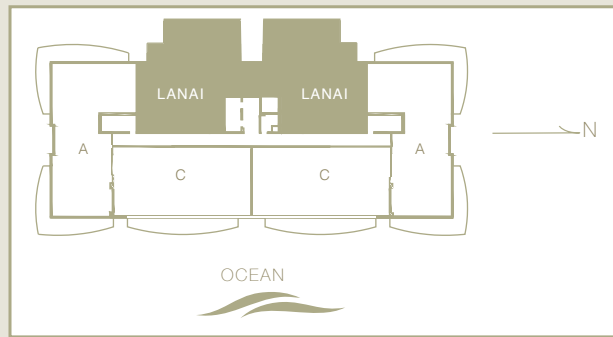
OCEAN RESORT & RESIDENCES

WELLNESS FOR LIFE

UNIT LANAI - Tower P

2 BEDROOM / 2 BATHROOMS

Living Area	1,610sf	(173.3sqm)
Terrace	1,450sf	(156.1sqm)
Total	3,060sf	(329.4sqm)



3100 North Ocean Drive, Singer Island
Riviera Beach, FL 33404

P 561.694.8300 amritocean.com

ORAL REPRESENTATIONS CANNOT BE RELIED UPON AS CORRECTLY STATING THE REPRESENTATIONS OF THE DEVELOPER. FOR CORRECT REPRESENTATIONS, REFERENCE SHOULD BE MADE TO THE PROSPECTUS AND ITS ATTACHMENTS.

All depictions including, without limitation, items of finish, furnishings and decoration, are conceptual only and are not necessarily included in each Unit. This offering is made only by the Prospectus for the condominium and no statement should be relied upon if not made in the Prospectus. All dimensions are approximate and may vary with actual construction, and all floor plans, prices, and development plans are subject to change. The seller reserves the absolute right, in its sole judgment and discretion, to substitute appliances, materials, fixtures, and equipment of equal or greater quality or value for those specified.

Amrit

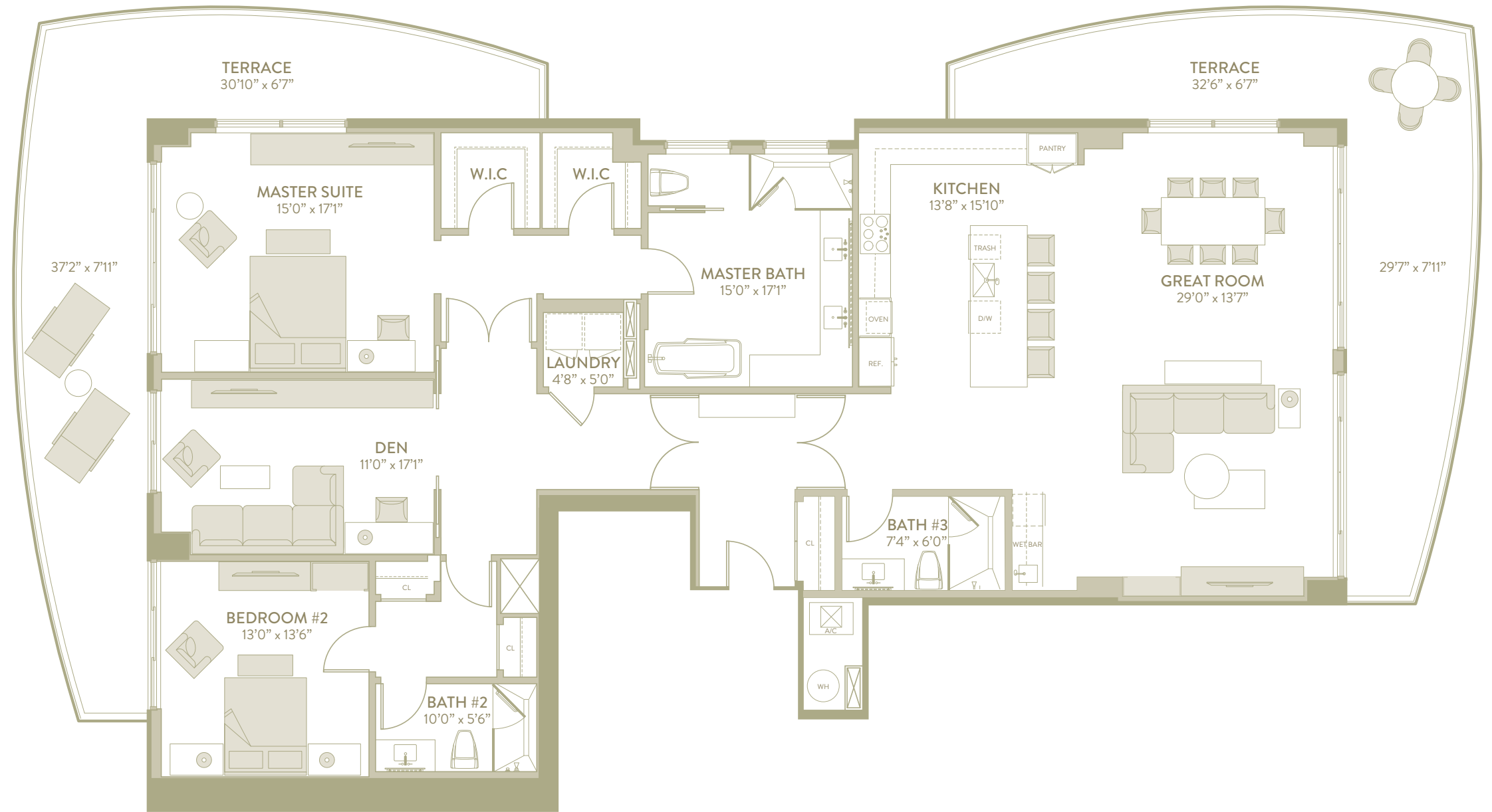
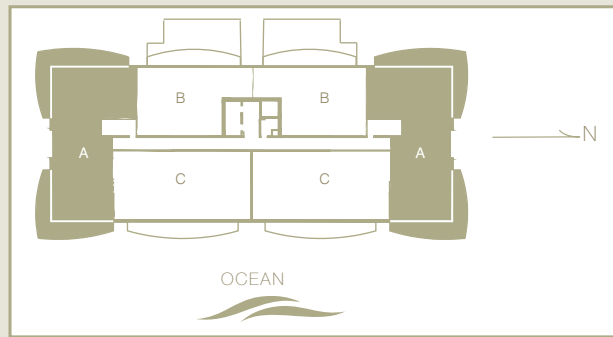
OCEAN RESORT & RESIDENCES

WELLNESS FOR LIFE

UNIT A - Tower P (Floors 4-10)

2 BEDROOM / 3 BATHROOMS / DEN

Living Area	2,520sf	(271.3sqm)
Terrace	900sf	(96.9sqm)
Total	3,420sf	(368.1sqm)



3100 North Ocean Drive, Singer Island
Riviera Beach, FL 33404

P 561.694.8300 amritocean.com

ORAL REPRESENTATIONS CANNOT BE RELIED UPON AS CORRECTLY STATING THE REPRESENTATIONS OF THE DEVELOPER. FOR CORRECT REPRESENTATIONS, REFERENCE SHOULD BE MADE TO THE PROSPECTUS AND ITS ATTACHMENTS.

All depictions including, without limitation, items of finish, furnishings and decoration, are conceptual only and are not necessarily included in each Unit. This offering is made only by the Prospectus for the condominium and no statement should be relied upon if not made in the Prospectus. All dimensions are approximate and may vary with actual construction, and all floor plans, prices, and development plans are subject to change. The seller reserves the absolute right, in its sole judgment and discretion, to substitute appliances, materials, fixtures, and equipment of equal or greater quality or value for those specified.

Amrit

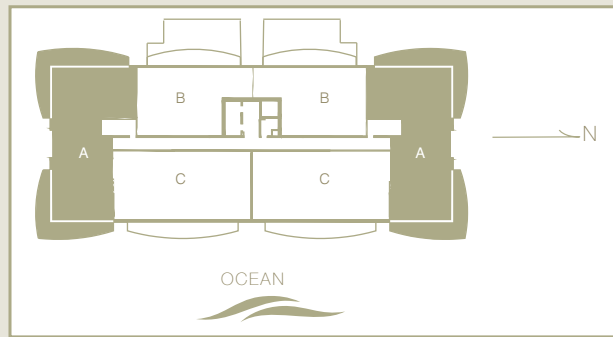
OCEAN RESORT & RESIDENCES

WELLNESS FOR LIFE

UNIT A - Tower P (floors 11-18)

2 BEDROOM / 2.5 BATHROOMS / DEN

Living Area	2,520sf	(271.3sqm)
Terrace	900sf	(96.9sqm)
Total	3,420sf	(368.1sqm)



3100 North Ocean Drive, Singer Island
Riviera Beach, FL 33404

P 561.694.8300 amritocean.com

ORAL REPRESENTATIONS CANNOT BE RELIED UPON AS CORRECTLY STATING THE REPRESENTATIONS OF THE DEVELOPER. FOR CORRECT REPRESENTATIONS, REFERENCE SHOULD BE MADE TO THE PROSPECTUS AND ITS ATTACHMENTS.

All depictions including, without limitation, items of finish, furnishings and decoration, are conceptual only and are not necessarily included in each Unit. This offering is made only by the Prospectus for the condominium and no statement should be relied upon if not made in the Prospectus. All dimensions are approximate and may vary with actual construction, and all floor plans, prices, and development plans are subject to change. The seller reserves the absolute right, in its sole judgment and discretion, to substitute appliances, materials, fixtures, and equipment of equal or greater quality or value for those specified.

Amrit

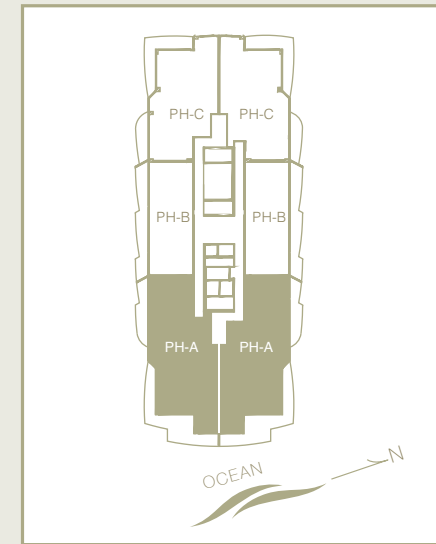
OCEAN RESORT & RESIDENCES

WELLNESS FOR LIFE

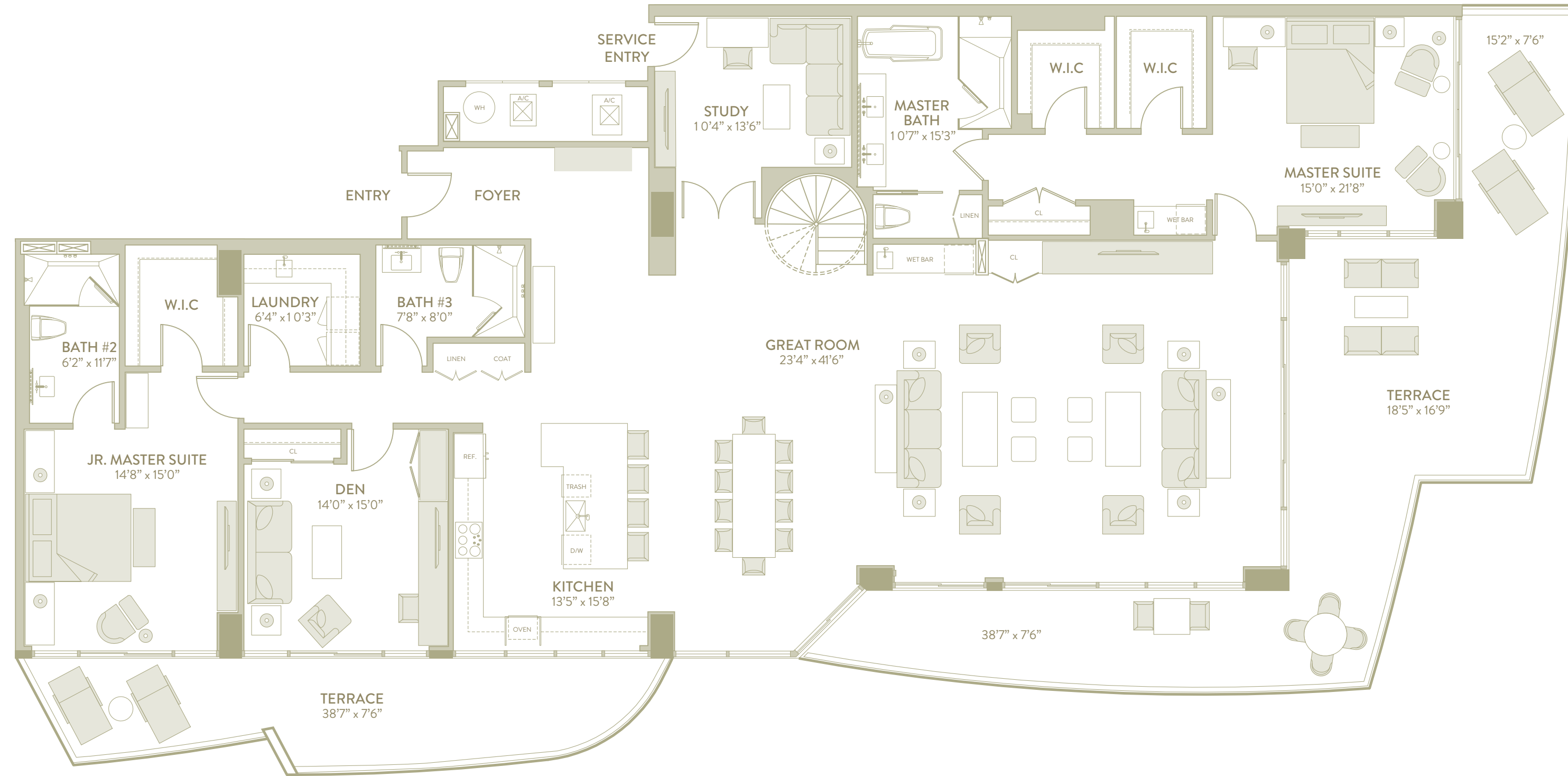
PH A - Tower H

2 BEDROOM / 3 BATHROOMS
+ DEN, STUDY

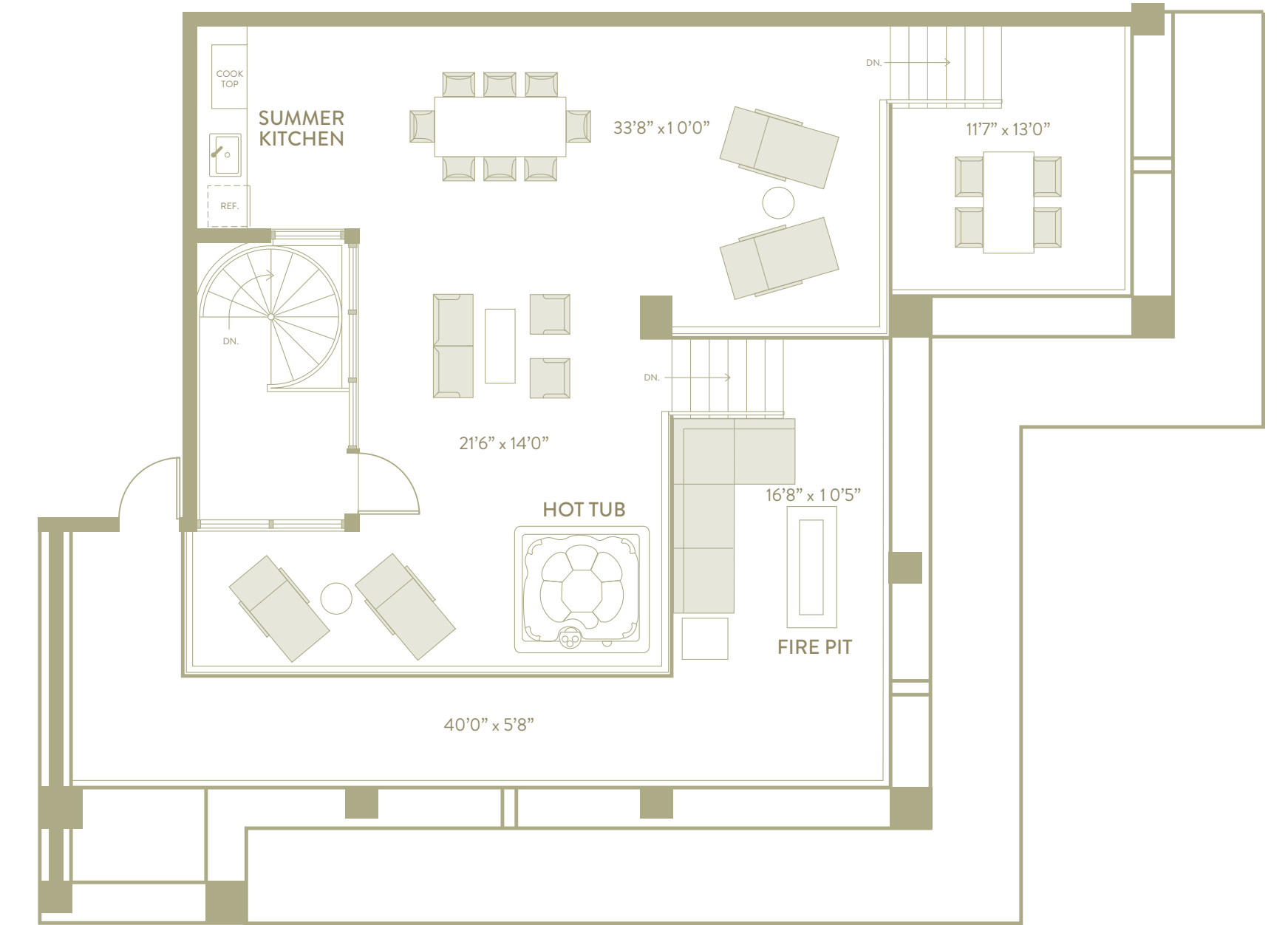
Living Area	3,390 sq	(364.9 sqm)
Terrace Area	1,020 sq	(109.8 sqm)
Roof Deck Area	1,435 sq	(154.5 sqm)
Roof Vestibule	130 sq	(14.0 sqm)
Total	5,975 sq	(643.1 sqm)



FLOOR 1



ROOFTOP



ORAL REPRESENTATIONS CANNOT BE RELIED UPON AS CORRECTLY STATING THE REPRESENTATIONS OF THE DEVELOPER. FOR CORRECT REPRESENTATIONS, REFERENCE SHOULD BE MADE TO THE PROSPECTUS AND ITS ATTACHMENTS.
 All depictions including, without limitation, items of finish, furnishings and decoration, are conceptual only and are not necessarily included in each Unit. This offering is made only by the Prospectus for the condominium and no statement should be relied upon if not made in the Prospectus. All dimensions are approximate and may vary with actual construction, and all floor plans, prices, and development plans are subject to change. The seller reserves the absolute right, in its sole judgment and discretion, to substitute appliances, materials, fixtures, and equipment of equal or greater quality or value for those specified.

Amrit

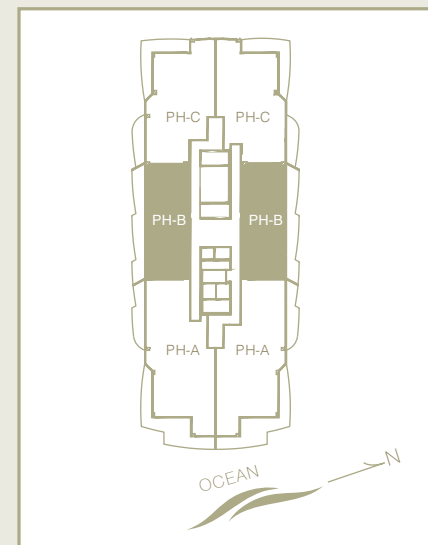
OCEAN RESORT & RESIDENCES

WELLNESS FOR LIFE

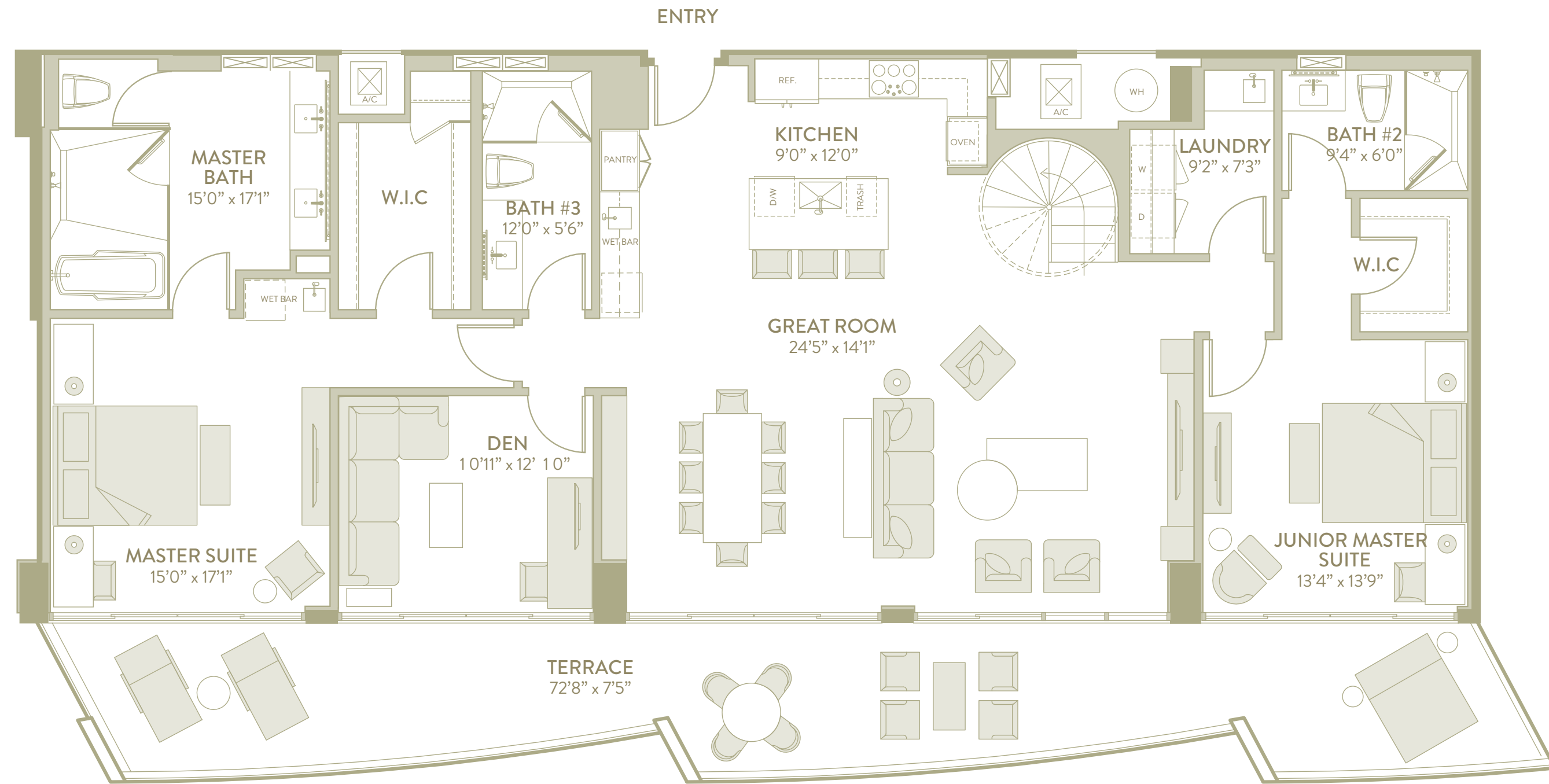
PH B - Tower H

2 BEDROOM / 3 BATHROOMS / DEN

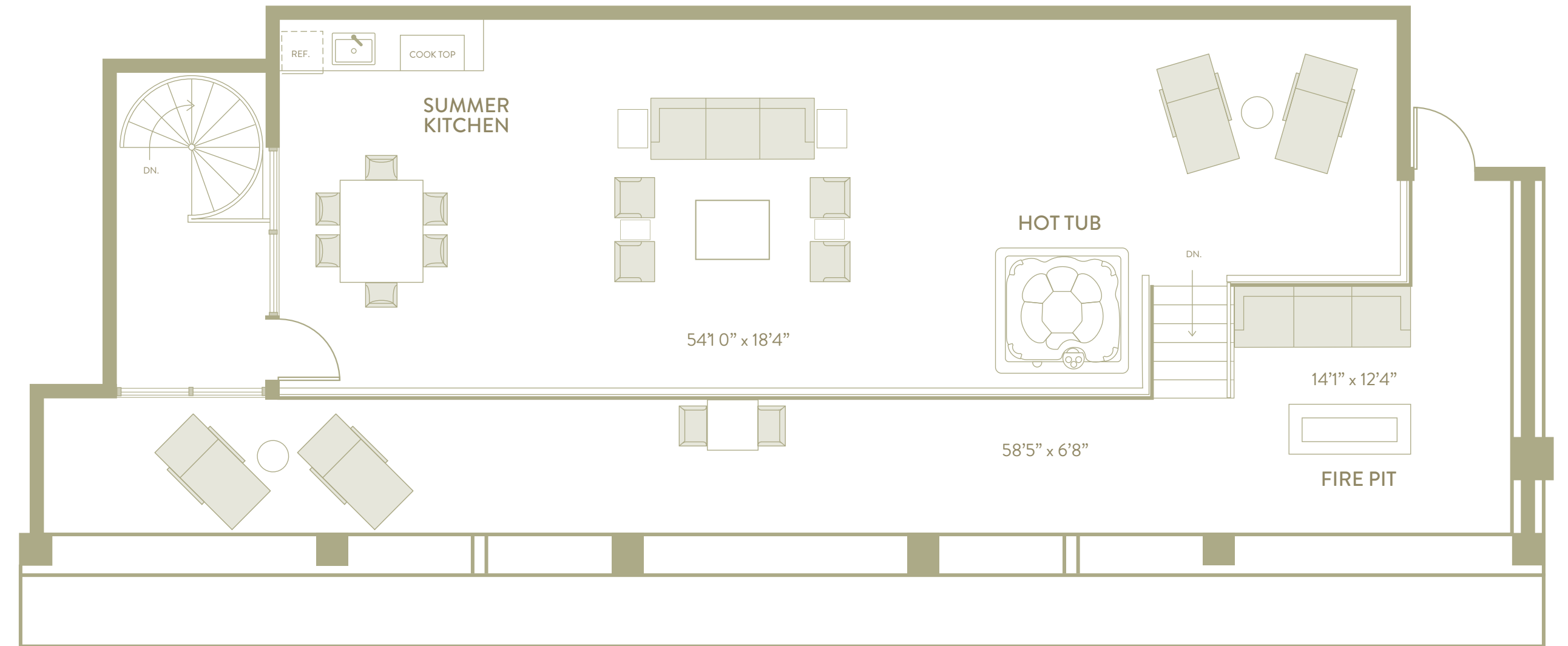
Living Area	2,055 sf	(221.2 sqm)
Terrace Area	525 sf	(56.5 sqm)
Roof Deck Area	1,730 sf	(186.2 sqm)
Roof Vestibule	145 sf	(15.6 sqm)
Total	4,455 sf	(479.5 sqm)



FLOOR 1



ROOFTOP



ORAL REPRESENTATIONS CANNOT BE RELIED UPON AS CORRECTLY STATING THE REPRESENTATIONS OF THE DEVELOPER. FOR CORRECT REPRESENTATIONS, REFERENCE SHOULD BE MADE TO THE PROSPECTUS AND ITS ATTACHMENTS.
 All depictions including, without limitation, items of finish, furnishings and decoration, are conceptual only and are not necessarily included in each Unit. This offering is made only by the Prospectus for the condominium and no statement should be relied upon if not made in the Prospectus. All dimensions are approximate and may vary with actual construction, and all floor plans, prices, and development plans are subject to change. The seller reserves the absolute right, in its sole judgment and discretion, to substitute appliances, materials, fixtures, and equipment of equal or greater quality or value for those specified.

Amrit

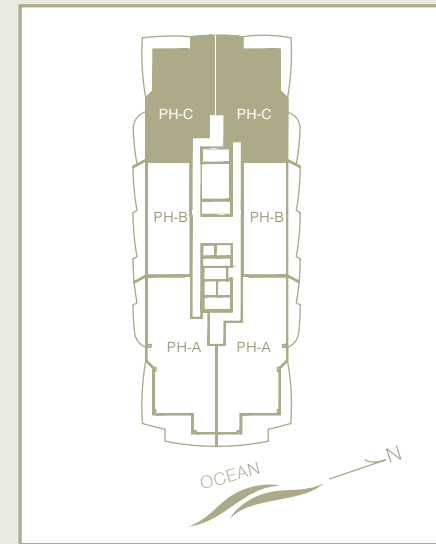
OCEAN RESORT & RESIDENCES

WELLNESS FOR LIFE

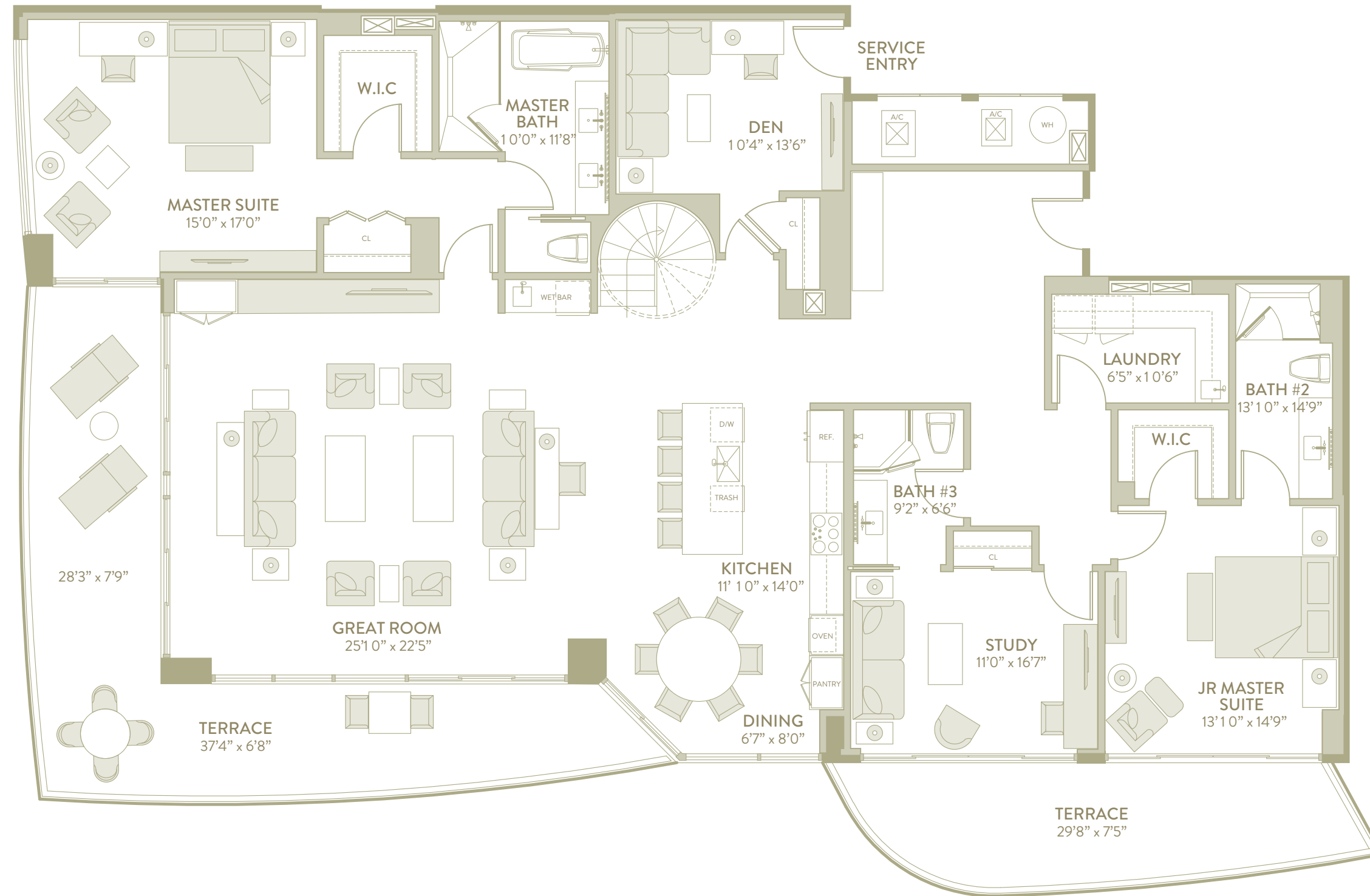
PH C - Tower H

2 BEDROOM / 3 BATHROOMS
+ DEN, STUDY

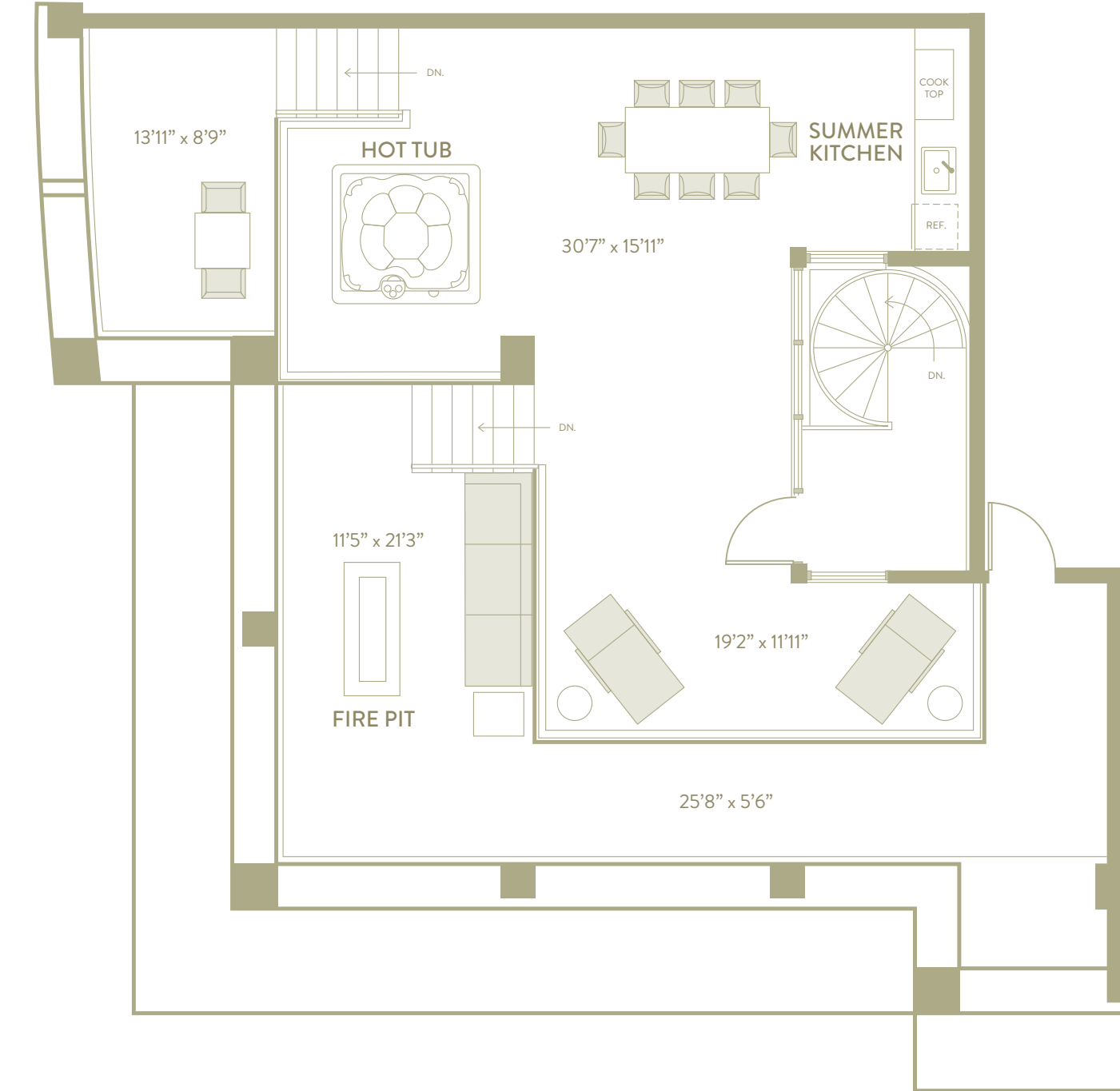
Architectural Area	2,820 sf	(303.5 sqm)
Terrace Area	640sf	(68.9sqm)
Roof Deck Area	1,265 sf	(136.2 sqm)
Roof Vestibule	130 sf	(14.0sqm)
Total	4,855 sf	(522.6 sqm)



FLOOR 1



ROOFTOP



ORAL REPRESENTATIONS CANNOT BE RELIED UPON AS CORRECTLY STATING THE REPRESENTATIONS OF THE DEVELOPER. FOR CORRECT REPRESENTATIONS, REFERENCE SHOULD BE MADE TO THE PROSPECTUS AND ITS ATTACHMENTS.
All depictions including, without limitation, items of finish, furnishings and decoration, are conceptual only and are not necessarily included in each Unit. This offering is made only by the Prospectus for the condominium and no statement should be relied upon if not made in the Prospectus. All dimensions are approximate and may vary with actual construction, and all floor plans, prices, and development plans are subject to change. The seller reserves the absolute right, in its sole judgment and discretion, to substitute appliances, materials, fixtures, and equipment of equal or greater quality or value for those specified.

Amrit

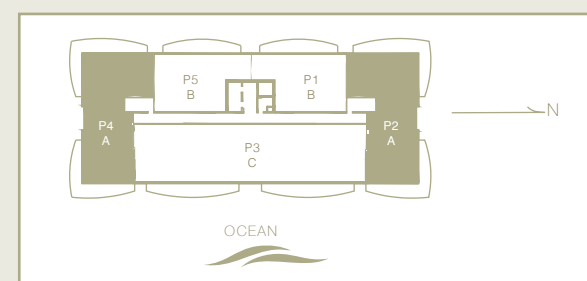
OCEAN RESORT & RESIDENCES

WELLNESS FOR LIFE

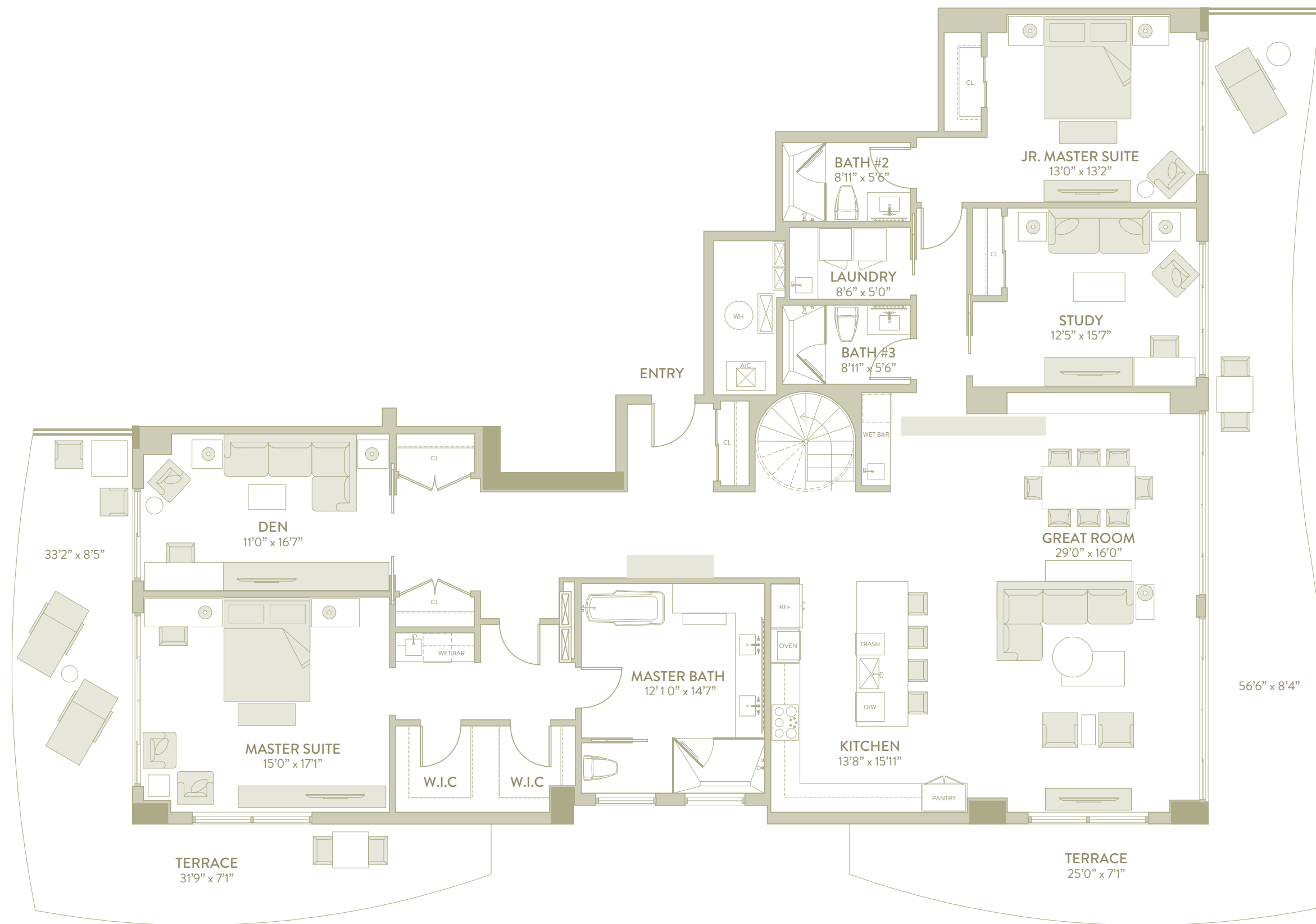
PH A - Tower P

2 BEDROOM / 3 BATHROOMS
+ DEN, STUDY

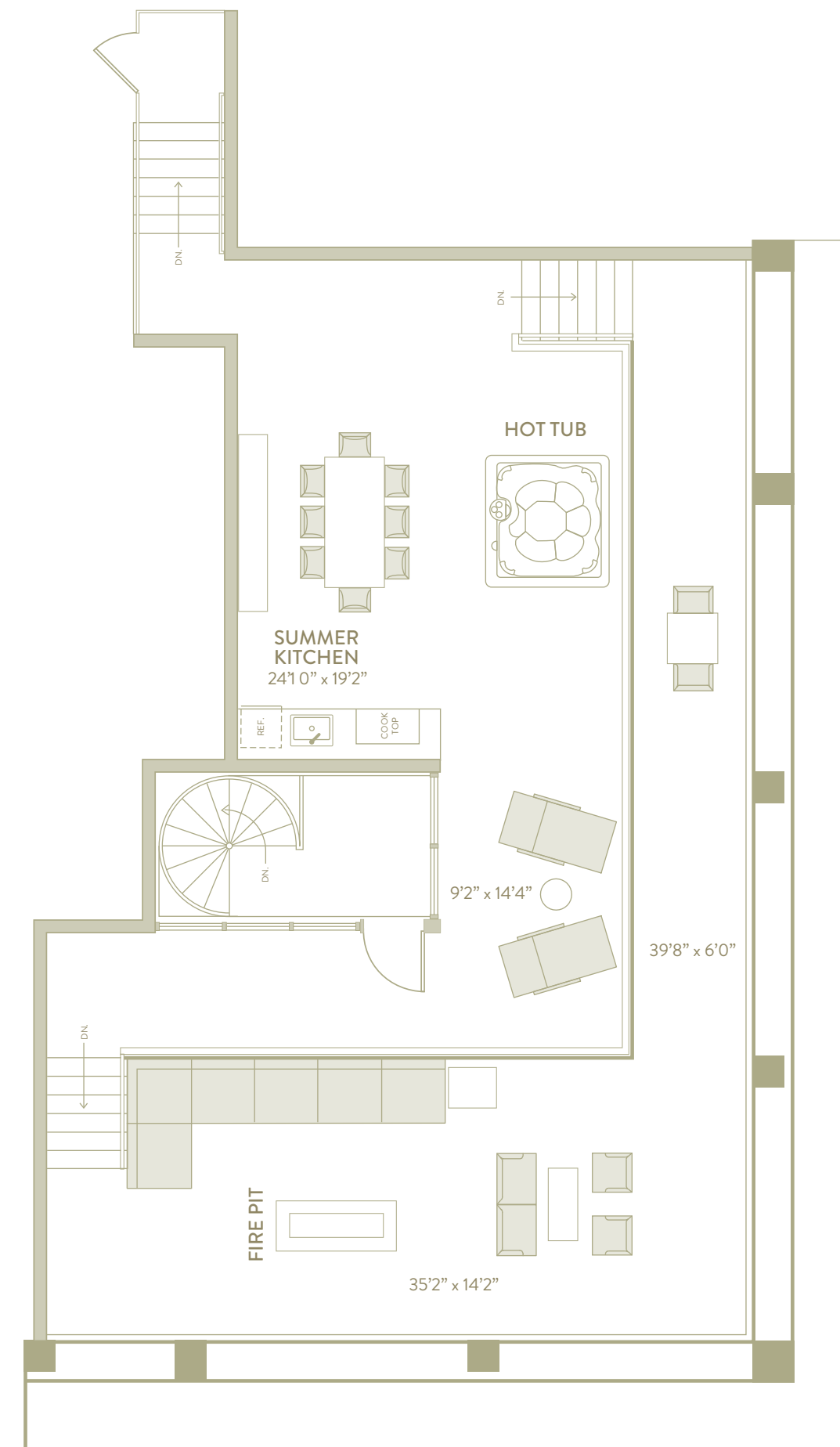
Living Area	2,845 sf	(306.2sqm)
Terrace Area	1,010sf	(108.7sqm)
Roof Deck Area	1510sf	(162.5sqm)
Roof Vestible	130 sf	(14.0sqm)
Total	5495 sf	(591.5sqm)



FLOOR 1



ROOFTOP



3100 North Ocean Drive, Singer Island

Riviera Beach, FL 33404

P 561.694.8300 amritocean.com

ORAL REPRESENTATIONS CANNOT BE RELIED UPON AS CORRECTLY STATING THE REPRESENTATIONS OF THE DEVELOPER. FOR CORRECT REPRESENTATIONS, REFERENCE SHOULD BE MADE TO THE PROSPECTUS AND ITS ATTACHMENTS.
All depictions including, without limitation, items of finish, furnishings and decoration, are conceptual only and are not necessarily included in each Unit. This offering is made only by the Prospectus for the condominium and no statement should be relied upon if not made in the Prospectus. All dimensions are approximate and may vary with actual construction, and all floor plans, prices, and development plans are subject to change. The seller reserves the absolute right, in its sole judgment and discretion, to substitute appliances, materials, fixtures, and equipment of equal or greater quality or value for those specified.

Amrit

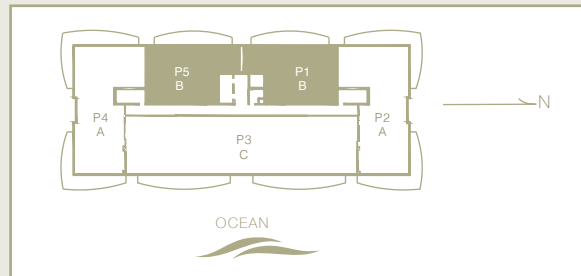
OCEAN RESORT & RESIDENCES

WELLNESS FOR LIFE

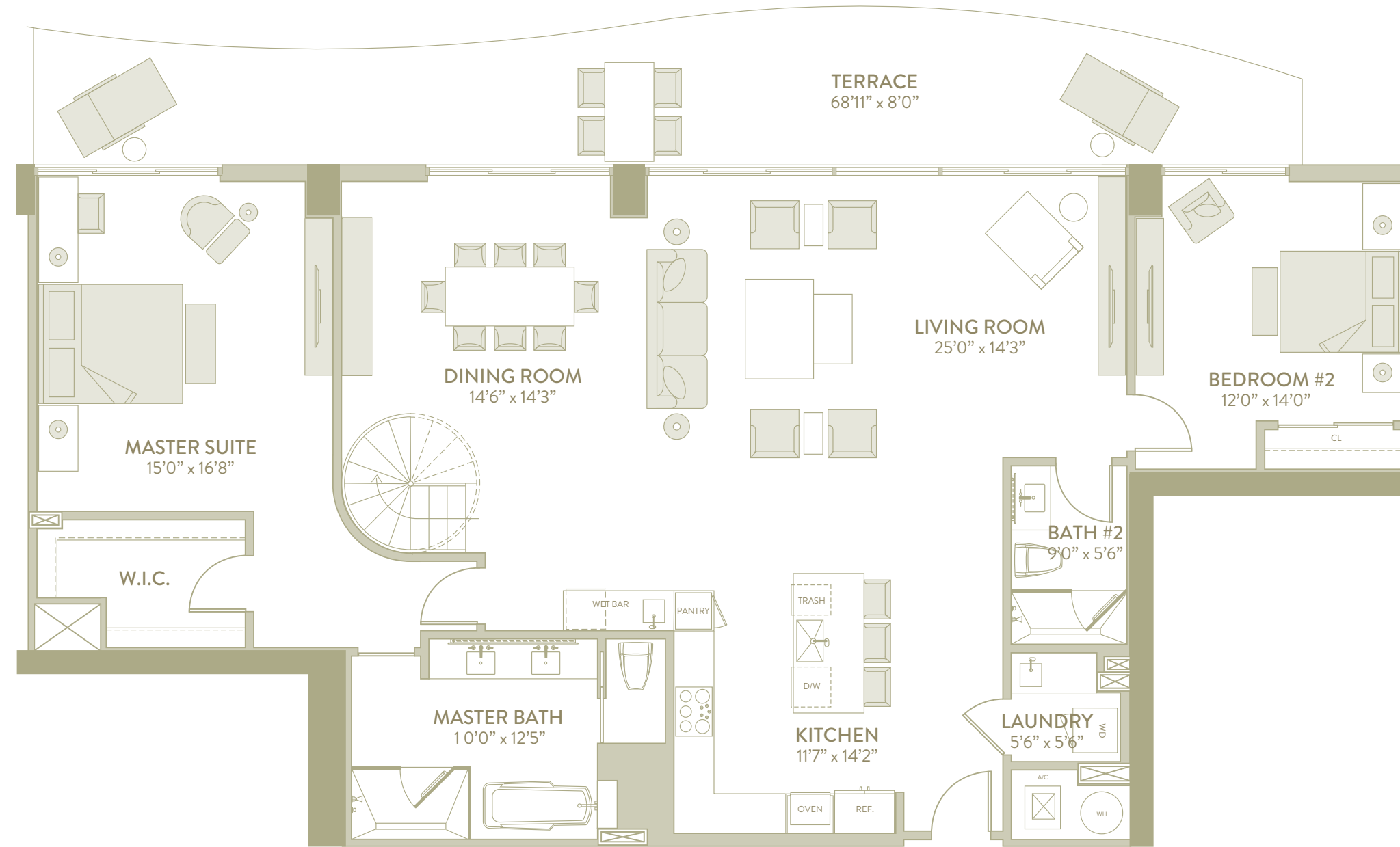
PH B - Tower P

2 BEDROOM / 2 BATHROOMS

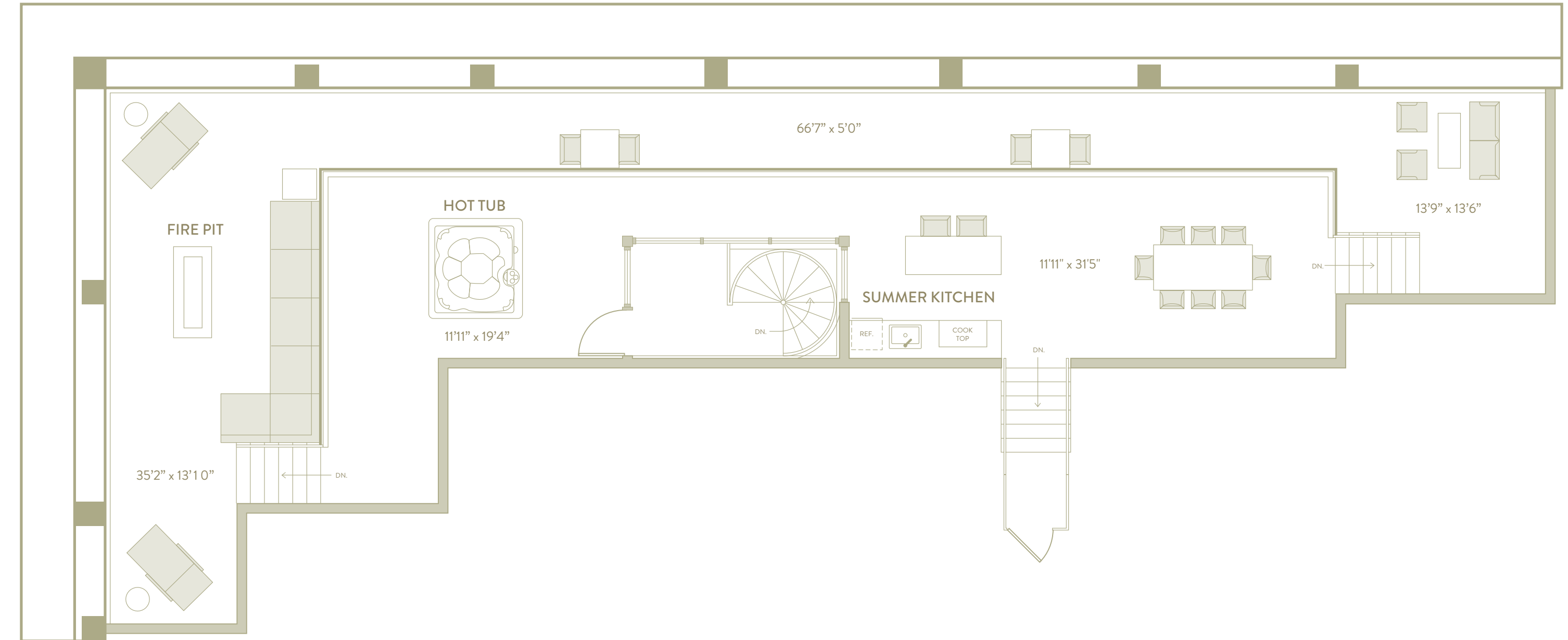
Living Area	1995 sf	(214.7 sqm)
Terrace Area	430 sf	(46.3 sqm)
Roof Deck Area	1,815 sf	(195.4 sqm)
Roof Vestibule	130 sf	(14.0 sqm)
Total	4,370 sf	(470.4 sqm)



FLOOR 1



ROOFTOP



3100 North Ocean Drive, Singer Island
Riviera Beach, FL 33404

P 561.694.8300 amritoccean.com

ORAL REPRESENTATIONS CANNOT BE RELIED UPON AS CORRECTLY STATING THE REPRESENTATIONS OF THE DEVELOPER. FOR CORRECT REPRESENTATIONS, REFERENCE SHOULD BE MADE TO THE PROSPECTUS AND ITS ATTACHMENTS.
All depictions including, without limitation, items of finish, furnishings and decoration, are conceptual only and are not necessarily included in each Unit. This offering is made only by the Prospectus for the condominium and no statement should be relied upon if not made in the Prospectus. All dimensions are approximate and may vary with actual construction, and all floor plans, prices, and development plans are subject to change. The seller reserves the absolute right, in its sole judgment and discretion, to substitute appliances, materials, fixtures, and equipment of equal or greater quality or value for those specified.

Amrit

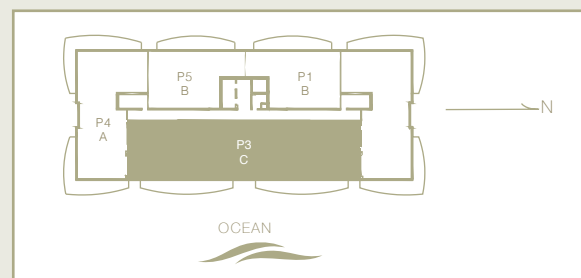
OCEAN RESORT & RESIDENCES

WELLNESS FOR LIFE

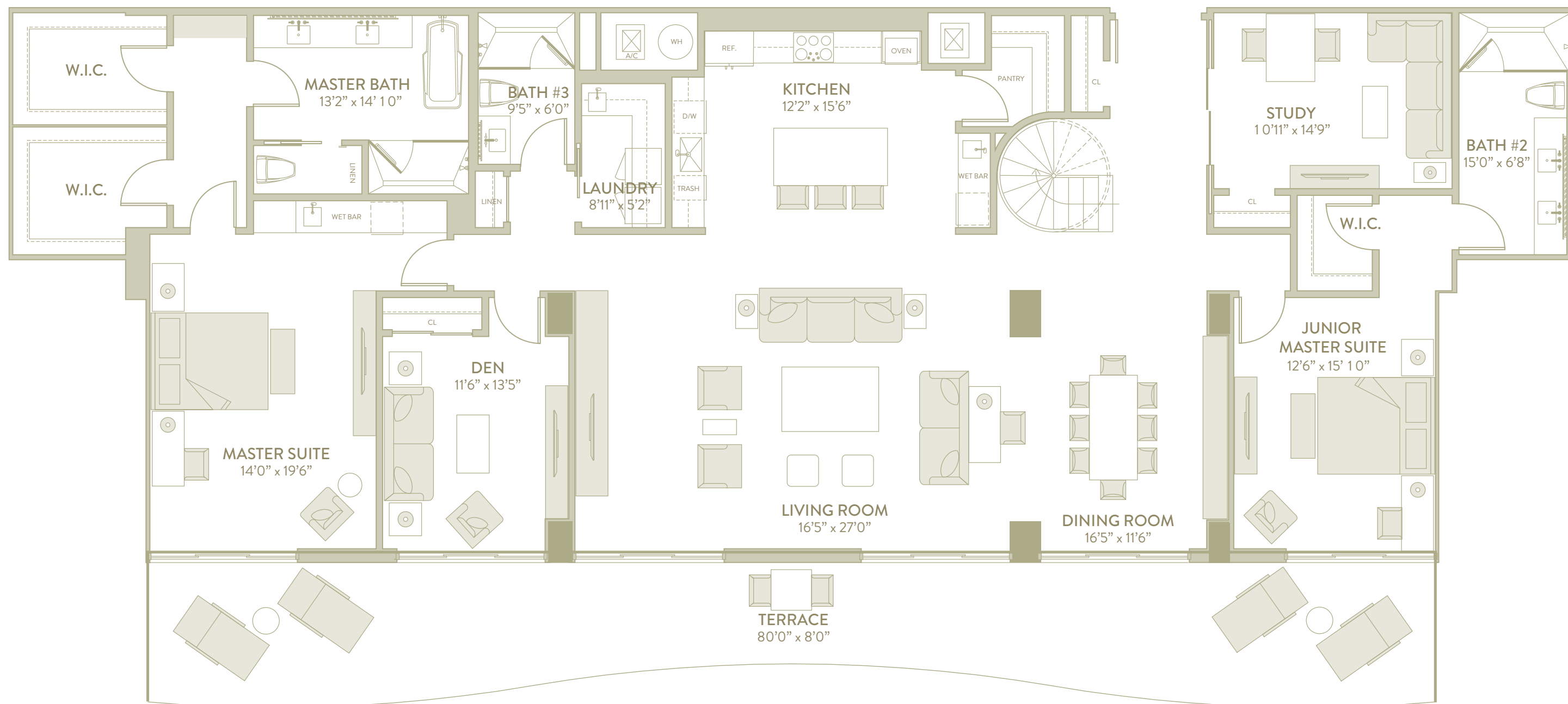
PH C - Tower P

2 BEDROOM / 3 BATHROOMS
+ DEN, STUDY

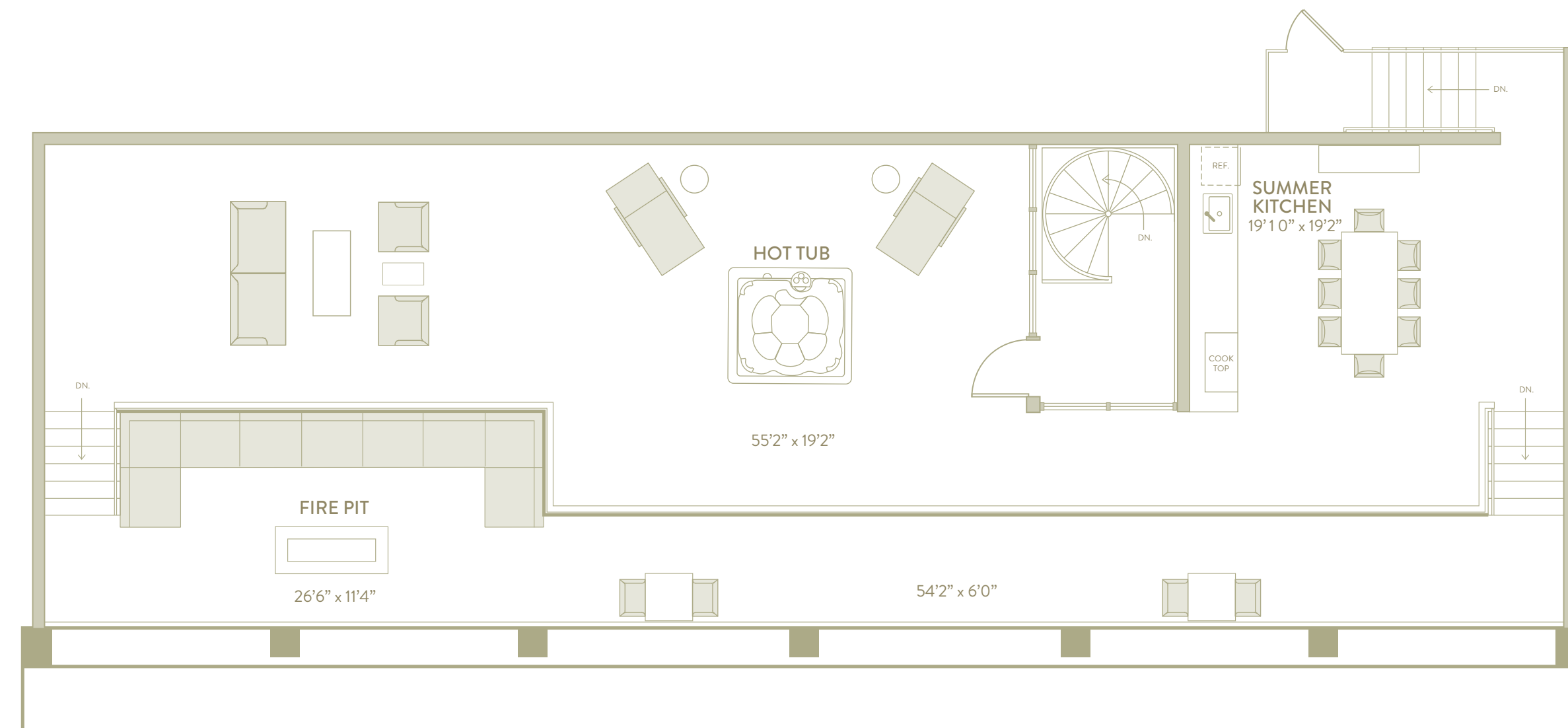
Living Area	3,000 sq	(322.9 sqm)
Terrace Area	555 sq	(59.7 sqm)
Roof Deck Area	1,985 sq	(213.7 sqm)
Roof Vestibule	130 sq	(14.0 sqm)
Total	5,670 sq	(610.3 sqm)



FLOOR 1



ROOFTOP



ORAL REPRESENTATIONS CANNOT BE RELIED UPON AS CORRECTLY STATING THE REPRESENTATIONS OF THE DEVELOPER. FOR CORRECT REPRESENTATIONS, REFERENCE SHOULD BE MADE TO THE PROSPECTUS AND ITS ATTACHMENTS.
All depictions including, without limitation, items of finish, furnishings and decoration, are conceptual only and are not necessarily included in each Unit. This offering is made only by the Prospectus for the condominium and no statement should be relied upon if not made in the Prospectus. All dimensions are approximate and may vary with actual construction, and all floor plans, prices, and development plans are subject to change. The seller reserves the absolute right, in its sole judgment and discretion, to substitute appliances, materials, fixtures, and equipment of equal or greater quality or value for those specified.

3100 North Ocean Drive, Singer Island

Riviera Beach, FL 33404

P 561.694.8300 amritocean.com